

TEMPORARY REVISION NO 72-03

1. Filing Instructions

Insert these 4 pages in Chapter 72-00 after page 14. Complete the Record of Temporary Revisions on page iii.

2. Applicability

This revision applies to all Grob G 115C/D aircraft from serial number 82001.

3. Reason For Revision

To introduce procedures to examine and replace the flap in the air filter box.

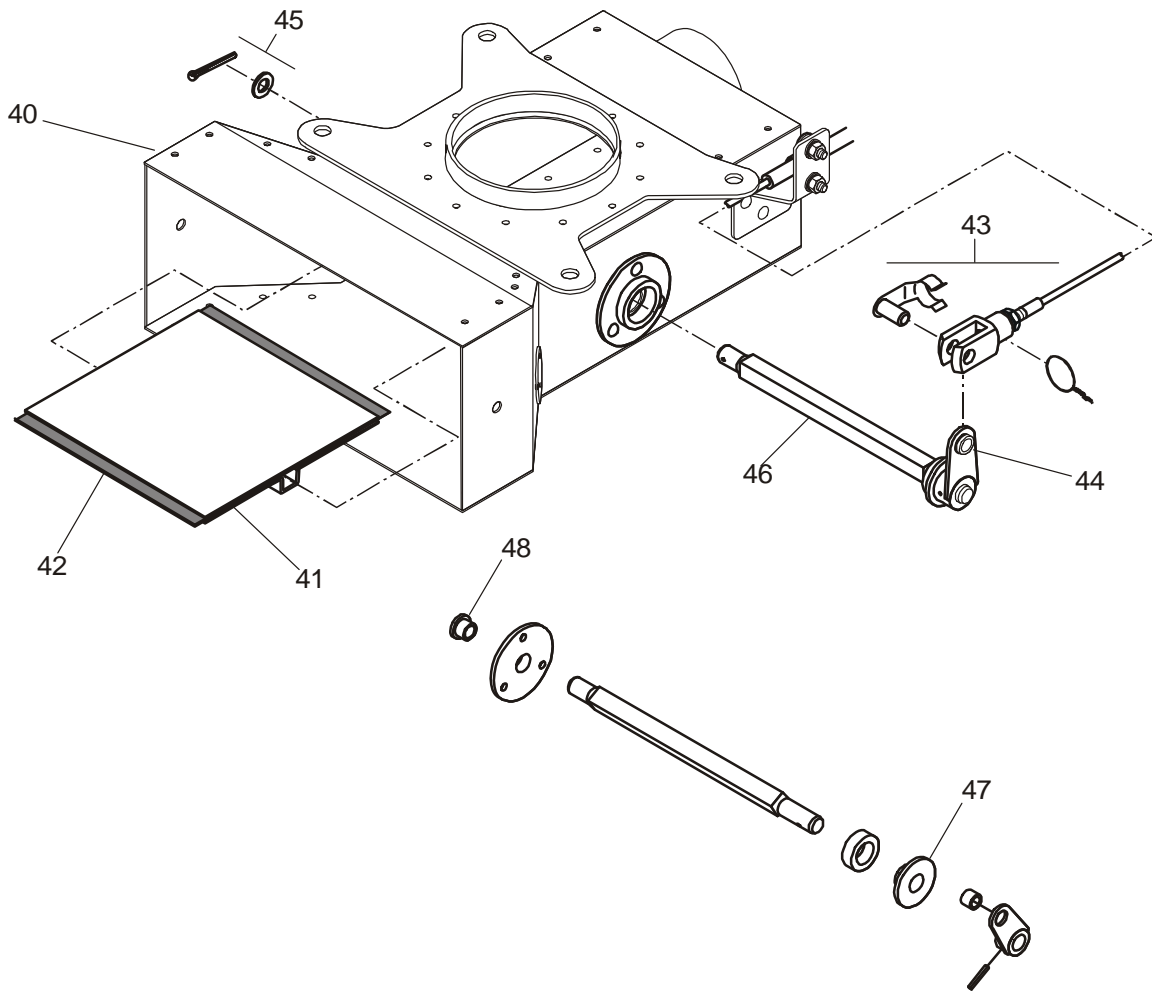
This Temporary Revision is linked to TR 05-06 which introduces an examination of the lip seal on the flap in the air filter box at 100 hours.

CHAPTER 72-00

MAINTENANCE PRACTICES

5. Examine the Flap in the Air Filter Box

	WORK ITEM	KEY ITEMS / REFERENCES
(1)	Remove the engine cowlings.	Chapter 71-10.
(2)	Remove the air filter from the air filter housing: <ul style="list-style-type: none">– Release the bolts which hold the housing.– Pull the filter element out of the housing.	Figure 3 Item 34. Item 37.
(3)	Examine the lip seal on the flap: <ul style="list-style-type: none">– Move the flap as necessary to examine the seal at the front and back of the flap.	Figure 4 items 42, 41. There must be no damage to the seal. The seal must be flexible.
(4)	If necessary, replace the alternate air flap.	Paragraph 6.
(5)	Install the air filter into the filter housing: <ul style="list-style-type: none">– Push the air filter fully into the housing.– Install and tighten the bolts.	Figure 3 item 34. Item 37
(6)	Install the engine cowlings.	Chapter 71-10



Legend

- | | |
|-------------------------------|----------------------------|
| 40. Air filter box. | 45. Cotter pin and washer. |
| 41. Alternate air flap. | 46. Axle. |
| 42. Lip seal. | 47. Left bush. |
| 43. Control Cable connection. | 48. Right bush. |
| 44. Small bush in lever. | |

Alternate Air Flap Installation in the Air Filter Box
Figure 4

Examine the Flap in the Air Filter Box

WORK ITEM	KEY ITEMS / REFERENCES
(1) Remove the engine cowlings.	Chapter 71-10.
(2) Remove the air filter from the air filter housing: <ul style="list-style-type: none">– Release the bolts which hold the housing.– Pull the filter element out of the housing.	Figure 3 Item 34. Item 37.
(3) Disconnect the alternate air control cable from the lever: <ul style="list-style-type: none">– Remove the safety wire from the end fitting.– Release the locking clip from the end fitting.– Remove the locking clip and pin to release the cable.– Make sure that the small bush in the lever is secure.	Figure 4 item 43. Item 44.
(4) Remove the cotter pin and washer from the end of the axle.	Item 45.
(5) Pull the axle from the air filter box.	Item 46.
(6) Remove the flap.	Item 41
(7) Examine the inside of the air filter box for damage.	Repair damage or replace the box as necessary.
(8) Examine the bushes in the left and right bearing housings.	Items 47, 48. If necessary, replace the bushes.
(9) Put the flap in position in the air filter box.	Items 41, 40.
(10) With the flap approximately horizontal, and the lever on the axle approximately vertical: <ul style="list-style-type: none">– Push the axle through the left bearing housing, the flap and the right bearing housing.– Install the washer and cotter pin.	Item 46. Item 45.

